

# TERM I -2020

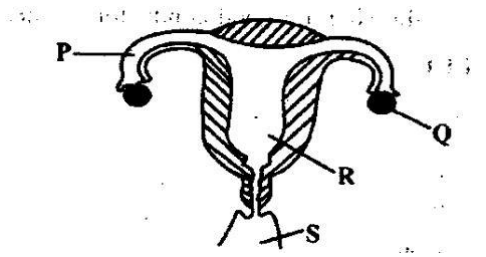
## SCIENCE STD SEVEN (7)

Time : 1 hr 40

1. The passage of both the sperms and the urine in the male reproduction organ is known as
  - A. Sperm duct
  - B. Penis
  - C. Urethra
  - D. Testes
2. Excess medicine that remains should be
  - A. Shared with other people
  - B. Thrown into a pit latrine
  - C. Kept for later use
  - D. Given to people suffering from the same disease
3. Which of the following statements is **CORRECT** about an air thermometer?
  - A. The scale should be labelled from the bottom to the top
  - B. A plastic bottle should be the best
  - C. Clear water is recommended for proper observation
  - D. When it is hot, the level of water in the straw goes down
4. Which list consists of the parts of a flower that makes up the pistil
  - A. Ovules, stigma style , ovary
  - B. Filament , anthers, pollen grains
  - C. Corolla, sepals, anthers
  - D. Stigma , ovary sepals filament
5. Std 6 pupils placed bean seeds in wet cotton wool and then kept in a refrigerator for three days. Which condition for germination were they investigating?
  - A. Water
  - B. Warmth
  - C. Oxygen
  - D. sunlight
6. Which one of the following is **NOT** a sign and symptom of cholera?
  - A. Severe diarrhea
  - B. Abdominal pain
  - C. Dehydration
  - D. Blood in the stool
7. The type of soil erosion in which a uniform layer is removed and deposited on the flower parts of a sloppy land is known as
  - A. Sheet erosion
  - B. Gulley erosion
  - C. Splash erosion
  - D. Rill erosion
8. Which one of the animals below are **CORRECTLY** grouped?

<u>Warm blooded</u>	<u>Scales on the body</u>
A. Hawk	Toad
B. Salamander	Whale
C. Shark	Dolphin
D. Bear	Trout
9. All the following are sources of light **EXCEPT**
  - A. Star
  - B. Fire fliers
  - C. Moon
  - D. Candle
10. Which one of the following methods of food preservation is both traditional and modern
  - A. Canning
  - B. Low temperature
  - C. Use of ash
  - D. Freezing
11. Which one of the following material can be grouped together with sky lights
  - A. A mirror
  - B. Spectacles
  - C. Frosted glass
  - D. Dirty water
12. The force that pulls objects towards the earth is known as
  - A. Gravity
  - B. Inertia
  - C. Pressure
  - D. mass

13. The diagram below represents the female reproductive system



Which statement is **CORRECT** about the labelled parts?

- A. P – allows the baby to grow
- B. Q- allows fusion of male and female sex cell
- C. S- receives the male sex cells
- D. R- produces the female sex cells

14. The following are signs of a certain disease;

- (i) *Body weakness*
- (ii) *Coughing of blood at times*
- (iii) *Prolonged coughs*
- (iv) *Chest pains*
- (v) *Fever*

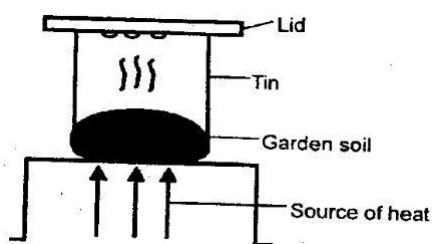
The disease can be prevented by

- A. Drinking boiled water
- B. Living in well ventilated rooms
- C. Draining stagnant water
- D. Covering the holes of pit latrine

15. Which one of the following is **NOT** needed when modelling the sky?

- A. Cotton wool
- B. Coloured pencils
- C. Pins
- D. Foil paper

16. The diagram below shows an experiment done to investigate a certain component of soil

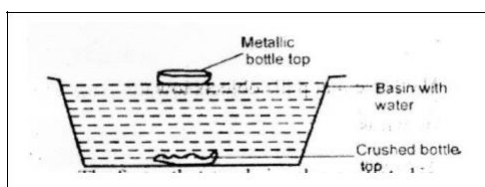


The components being investigated is

- A. Minerals
- B. Air
- C. Humus
- D. Water

17. Which one of the following animals feeds is a type of stored dry fodder
- A. Silage
  - B. Hay
  - C. Desmodium
  - D. Star grass
18. In which stages of HIV infection does the victim show no signs but any medical reveals the presence of the virus in the blood?
- A. Incubation
  - B. Full blown
  - C. Symptomatic
  - D. window
19. Which one of the following is green non flowering?
- A. Mushroom
  - B. Penicillin
  - C. Algae
  - D. Sorghum
20. A rain gauge is dug about 15cm into the ground **MAINLY** to
- A. Make it firm
  - B. Reduce evaporation of the collected water
  - C. Prevent water from splashing into the funnel
  - D. Make it withstand harsh outdoor conditions
21. Which one of the following list consists of animals with backbone?
- A. Cobra, tortoise , millipede
  - B. Earthworm, weevil, beetle
  - C. Hippo, butterfly, chameleon
  - D. Gecko, owl, bat
22. The type of soil which has the highest capillarity
- A. Feels rough between the fingers
  - B. Cracks when dry
  - C. Also has large airspace
  - D. Does not hold together when wet
23. Which pair consists of both energy-giving foods?
- A. Wheat and groundnuts
  - B. Sunflower and lettuce
  - C. Fish and milk
  - D. Rice and peas

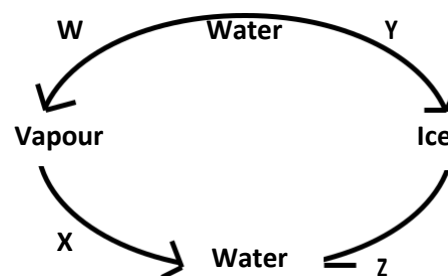
24. Which one of the following is **NOT** a deficiency disease?
- Kwashiorkor
  - Malaria
  - Anaemia
  - Rickets
25. Which one of the following is the last step when setting up an experiment to demonstrate conduction of heat in solids?
- Fixing the pins onto the candle wax
  - Heating one end of the metal strip
  - Fixing the metal strip on to support
  - Fixing candle wax onto the metal
26. The diagram below shows an experiment done to demonstrate a certain factor that affects floating and sinking;



The factor that was being demonstrated is

- size
  - material
  - weight
  - shape
27. All the following are good conductors of heat **EXCEPT**
- Iron
  - Copper
  - Wood
  - Aluminum
28. A certain animal has the following characteristics
- Lay eggs
  - Cold blooded
  - Body covered with dry scales
  - Breathes through lungs
- The animal is likely to be
- A toad
  - A crocodile
  - A duck
  - A shark
29. Food mixes with gastric juice in the
- Stomach
  - Mouth
  - Ileum
  - duodenum

30. The illustration below shows changes of state of matter

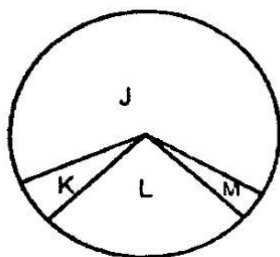


Which pair of the process labelled **WXY** and **Z** represents melting and condensation respectively?

- X and Z
  - W and Y
  - Z and X
  - Y and X
31. The substance contained in foods that help to maintain the good health of the body are known as
- Nutrient
  - Food
  - Meal
  - Nutrition
32. Which statement about sound is **TRUE**?
- The extent of loudness or softness of a sound is called pitch
  - The shape of the ears of most animals help to amplify sound
  - Noise make people alert
  - A choir singing loudly will cause noise pollution
33. Which one of the following aspects is common to both steam and flour?
- Definite shape
  - Definite volume
  - No definite shape
  - Definite mass
34. An example of a recreational use of water is
- Rearing fish in pond
  - Bathing
  - Surfing
  - Making fountains
35. All the following are likely to take place when heat is reduced on different states of matter **EXCEPT**.
- Reducing in size
  - Condensing
  - Freezing

- D. Melting
36. Which of the following is **NOT** a way in which different animals protect themselves from danger?
- A. Flying off  
B. Biting  
C. Hiding in shells  
D. Sucking blood
37. Which one of the following changes in adolescence occurs in both boys and girls?
- A. Increase in height and weight  
B. Growth of breasts  
C. Wet dreams  
D. Broadening of hips
38. The pie chart below represents the composition of air. The gas which is used to put out a accidental fires is named

...



- A. L    B.K    C.M    D.J
39. Which one of the following aspects of light results to formation of the rainbow?
- A. Dispersion  
B. Reflection  
C. Refraction  
D. Moving in straight line
40. When modelling the solar system
- A. The balls to represent the planets should be of the same size  
B. Two balls can be placed on one side  
C. The name tags of the planet and the sun are fixed last  
D. The model of the sun is fixed on the last circle
41. Which part of the flower becomes the fruit after fertilization?
- A. Petals  
B. Ovary  
C. Ovules  
D. Anthers

42. Which one of the following practices will help it make water safe for drinking?
- A. Filtering  
B. Storing in a clean container  
C. Mixing it with soap  
D. Boiling
43. Which one of the following is **NOT** a requirement for good health?
- A. Medicines  
B. Food  
C. Exercises  
D. Sleep
44. A snail moves by
- A. Walking    B. crawling  
C. sliding    D. slithering
45. Which one of the following plants has separate male and female flowers on separate plants
- A. Maize    B. Sugar  
C. Millet    D. Pawpaw
46. Which one of the following is **NOT** an importance of HIV testing?
- A. To make a decision on marriage  
B. To plan for future of the dependents  
C. To campaign for the spread of HIV  
D. To change behaviour
47. Which one the following animal feeds is **NOT** concentrate?
- A. Nappier grass  
B. Bone meal  
C. Fish meal  
D. Layers mash
48. Which of the animals below is **CORRECTLY** matched with its product
- A. Poultry → milk, wool, milk  
B. Cattles → beef, mutton, wool  
C. Sheeps → wool, milk, mutton  
D. Goat → skin, mutton, milk
49. Which one of the following parts of a plant helps to transport water to all other parts?
- A. Roots    B. Leaves    C. Stems    D. Flowers
50. A beam balance is used to
- A. Compare masses of objects  
B. Measure weight of substances  
C. Compare volume of different objects  
D. Balance different objects